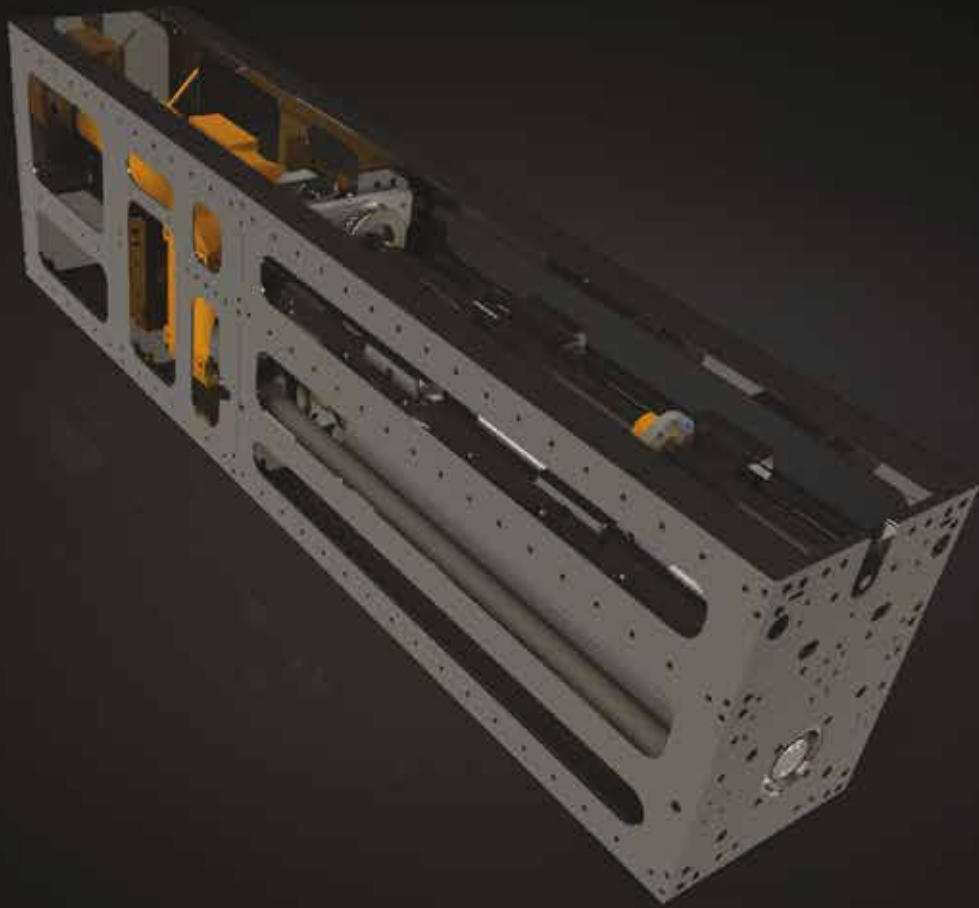


ezR

Flying Made Easy



ez-Hoist

AUTOMATION MADE EASY

Zero fleet angle positional redirect pulleys built into hoist

Includes top of the line components like SEW, Mayr, TER, Dodge, Martin, Harting, Igus, and, of course, ZFX

Dual, independently positional moving fairlead pulleys. No need for 50 dead wraps when doing roll-on roll-off!

Easy-to-set intuitive limit switches, ideal for frequent adjusting

Redundant, manually releasable brakes featuring quiet operation

Designed to easily spin or reeve the drum without power. Ideal for real world problems during setup when electricians haven't run power or the generator is on a truck

Comes standard with portable battery powered brake release

Ready to use for a single line, dual line, or a roll-on, roll-off, for travel/traverse systems

Two spring mounted, adjustable tension, urethane coated cable keeper rollers



Can be used with eZ-Hoist single axis controls or Raynok control system

# eZ Hoist eZR

	STANDARD	OPTIONAL
Voltage	208vac	380-420, 480vac 50/60hz
Servo Horsepower *	6HP (4.5kW)	Nearly infinite options
Load Capacity	260 lbs (118 kg)	Nearly infinite options
Speed	9 ft/s (2,75 m/s)	Nearly infinite options
Lift with single line	240 ft (73m)	Nearly infinite options
Lift with dual lines	2 x 120 ft (2 x 36 m)	Nearly infinite options
Rope Diameter	5/32" (4mm)	3/16" (5mm), 1/4" (6mm)
Brake Coil	24vdc	208-230, 380-420, 480 vac
Encoder	Hiperface	SSI, EnDat
Weight	400 lbs (181 kg)	----

\*Of course servos aren't normally rated in horsepower\*\*. This is for easy comparison since the industry rating style of Newton meters of torque (nominal) at a certain RPM is difficult to use when comparing servo motors to AC motors.  
 \*\* Horsepower = (torque in inch/lbs \* RPM) / 5252

