



europa

[www.zfxeuropa.eu](http://www.zfxeuropa.eu)

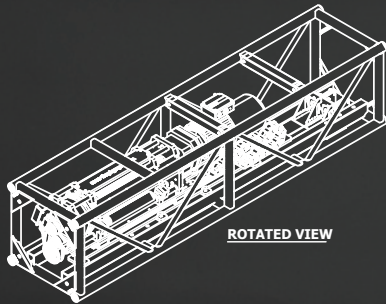
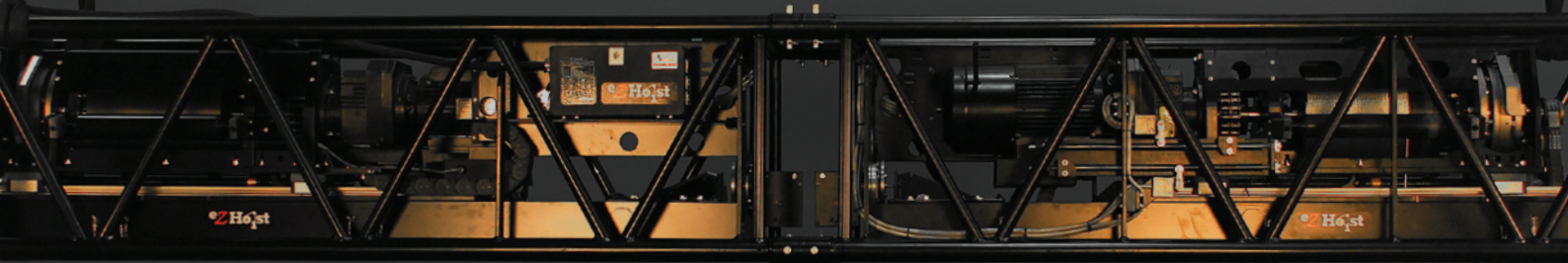
# ezHoist

ezHoist

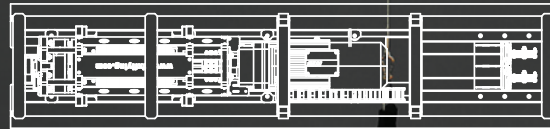


# eZ Hoist

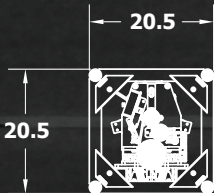
The ZFX eZHoist Series hoists are suitable for a variety of hoist uses but were developed specifically to meet the needs of productions requiring high performance live performer flying acts. The eZHoists are truss mounted, programmable controlled lifting hoists. The zero fleet mounting offers the end-user great flexibility in final hoist point location relative to the hoist.



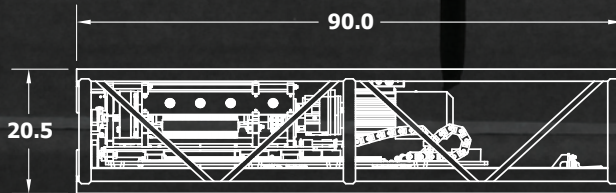
ROTATED VIEW



PLAN VIEW



END VIEW



SIDE VIEW

## FEATURES

Zero fleet angle

Easy to set intuitive limit switches, great for frequent adjusting

Ready to use as a single line, dual line, or a roll-on roll-off (for travel/traverse systems)

Redundant, quiet operating, manually releasable brakes

Spring mounted, quiet, cable keeping rollers

Positional redirect pulleys built in to truss.

Did we mention nearly silent when running?

SIL:3 compliant options available

Bad Ass! Coolest looking piece of gear on any load in!

Model Spec	eZ-115	eZ-250
Intended Market	International	USA
Voltage	400, 50hz	208, 60hz
Load Capacity	115kG	250lbs
Speed	2.8 M/s	8 F/s
Speed (Old School)	168 M/min	480 F/min
Lift with Single line	50 Meters	160 Feet
with Dual lines	2x25 Meters	2x80 Feet
Truss Type	52cm Conical	20.5" Plated
Length	2 Meters	7' 6"
Weight	200Kg	460lbs

#### DEVELOPMENT FACILITY

611 Industry Road | Louisville, KY 40208  
tel: 502.637.2500 | fax: 502.637.7878

#### FINANCIAL OFFICES

6232 Moonfield Drive | Huntington Beach, CA 92648  
tel: 714.775.4321 | fax: 714.775.0711

#### EUROPEAN OPERATIONS

Veldzigt 3 3454 PW De Meern The Netherlands  
tel: +31(0)30-2428280